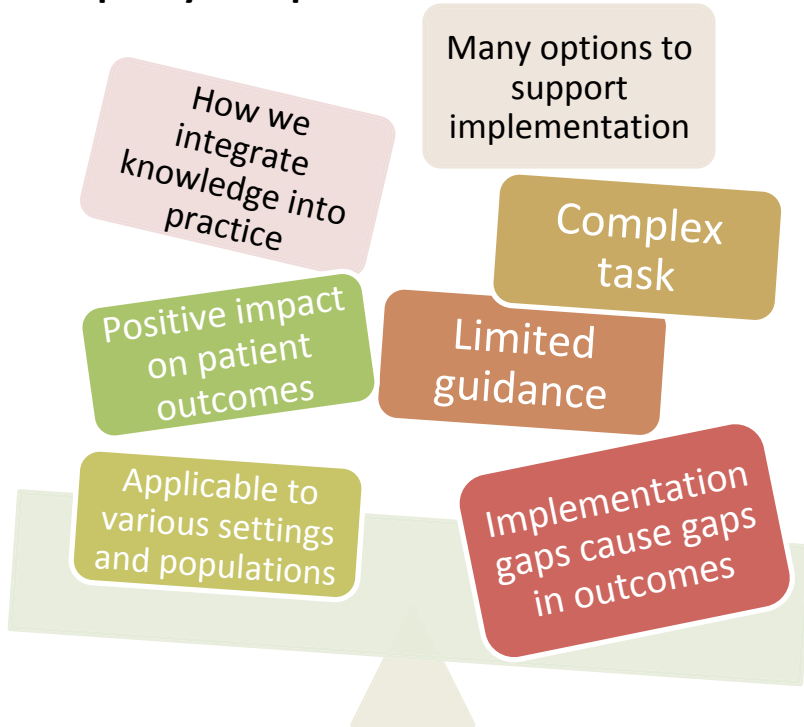


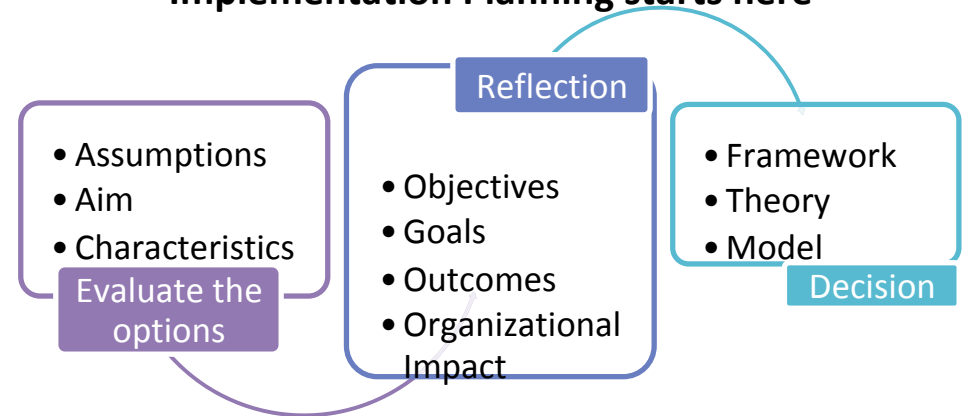
Purpose

Reduce the risk of implementation failure by choosing the appropriate model, theory, or framework to guide the development and implementation of healthcare policy.

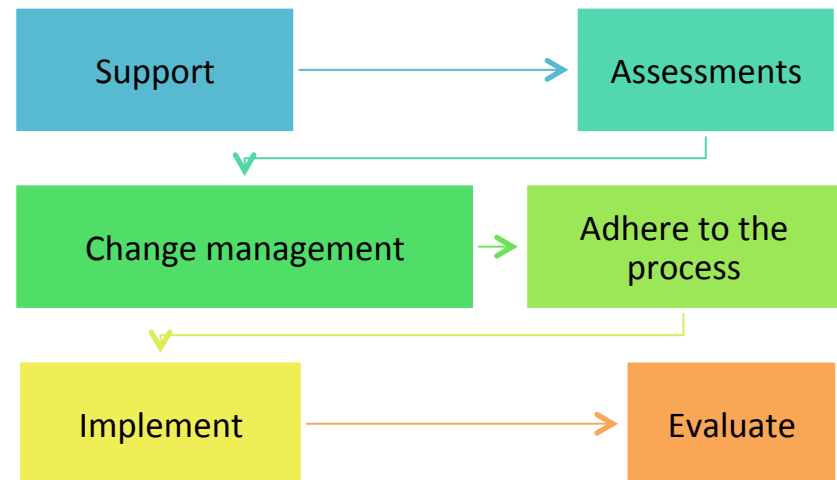
Implementing evidence through policy into practice: What we know!



Implementation Planning starts here



Application



References
 Bauer, M., Damschroder, L., Hagedorn, H., Smith, J., & Kilbourne, A. (2015). An introduction to implementation science for the non-specialist. *BMC Psychology*, 3(32). doi: 10.1186/s40359-015-0089-9
 Bertram, R., Blase, K., & Fisen, D. (2015). Improving Program and Outcomes: Implementation Frameworks and Organization Change. *Research on Social Work Practice*, 25(4), 477-487. doi: 10.1177/1049731514537687
 Coles, E., Wells, M., Maxwell, M., Harris, F., Anderson, J., Gray, N., Milner, G., & MacGillivray, S. (2017). The influence of contextual factors on healthcare quality improvement initiatives: what works, for whom and in what setting? Protocol for a realist review. *Systematic Reviews*, 6(168). doi: 10.1186/s13643-017-0566-8
 Gilson, L. (2016). Everyday Politics and the Leadership of Health Policy Implementation. *Health Systems & Reform*, 2(3), 187-193. doi: 10.1080/23288604.2016.1217367
 Harvey, G., Kitson, A. (2015). Translating evidence into healthcare policy and practice: Single versus multi-faceted implementation strategies – is there a simple answer to a complex question? *International Journal of Health Policy and Management*, 4(3), 123-126. doi: 10.15171/ijhpm.2015.54
 Liang, L., Bernhardtson, S., Vernooij, R., Armstrong, M., Busieres, A., Brouwers, M., Gagliardi, A., & Members of the Guidelines International Network Implementation Working Group. Use of theory to plan or evaluate guideline implementation among physicians: a scoping review. *Implementation Science*, 12(26). doi: 10.1186/s13012-017-0557-9
 Markham, C., Proctor, E., & Pineda, J. (2017). Implementation Strategies in Pediatric Neurocritical Care. *US National Library of Medicine National Institutes of Health*. Retrieved from <https://www.ncbi.nlm.nih.gov/pmc/articles/PMC5784417/>
 Nilsen, P. (2015). Making sense of implementation theories, models and frameworks. *Implementation Science*, 10(53). doi: 10.1186/s13012-015-0242-0
 Powell, B., Beidas, R., Lewis, C., Aarons, G., McMillen, J.C., Proctor, E., & Mandell, D. (2015). Methods to Improve the Selection and Tailoring of Implementation Strategies. *Journal of Behavioral Health Services & Research*, 44(2), 177-194. doi: 10.1007/s11414-015-9475-6