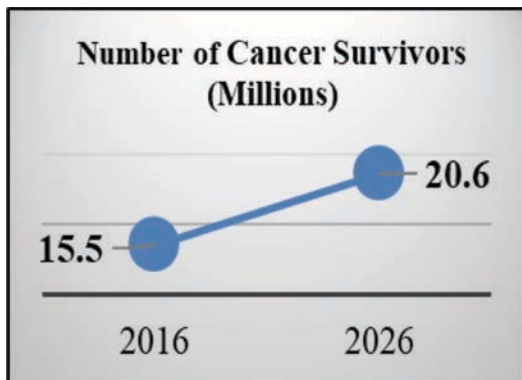


Developing a Comprehensive, Evidence-Based, Supportive Services Program for Cancer Survivors in a Private Oncology Practice



Joseph Ellul DNP, AGNP-C, Tanya Rowerdink DNP, RN, NP-C, CCD, Dianne Conrad DNP, FNP-BC, Robert Johnson MD, M.Ed.

Background



Clinical Practice Question

What is an evidence-based, efficient, cost-effective, and sustainable program that delivers supportive services to cancer survivors in a private oncology practice?

Methods

Organizational Assessment



Literature Review



Provider Surveys



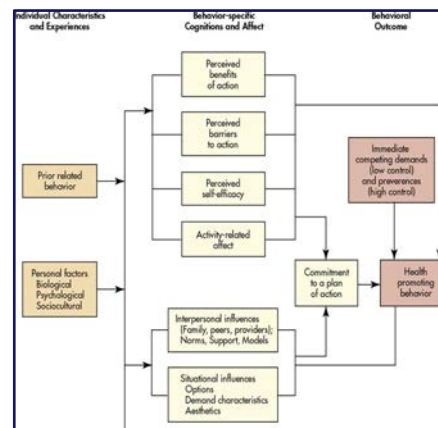
Stakeholder Meetings



Marketing and Education

Frameworks

Health Belief Model



(Pender, Murdaugh, & Parsons, 2011)

Kotter's Eight Step Process For Leading Change



(Kotter International, 2018)

Toolkit Development

- Program Proposals
- Patient Education Materials
- Clinic Processes
- Business Plans
- Evaluation and Sustainability Plans

Evaluation and Sustainability

- Satisfaction Surveys
- Patient Volume
- Scheduled-Wait Times
- Cost Analysis
- Model Driven
- Performance-Based Payments
- Certification Maintenance

Unmet Wellness Needs

- **Smoking -13% Continue to smoke** (National Cancer Institute, 2018).
- **Bone Health - Bone Mineral Density Reduction** (Hong et al., 2017).
- **Sexual Health - Distress, depression, and quality of life** (Bae & Park, 2016; Usta & Gokcol, 2017).
- **Fatigue - 30% to 60% during treatment** (Bower, 2014) **40% 12 months after treatment** (Carlson, Waller, Groff, Giese-Davis, & Bultz, B.D., 2013)

Practice Implications

- Increase Performance-Based Payments
- Maintain Certification
- Leaders in Oncology Care
- Patient Satisfaction Scores
- Quality of Life

References Available Upon Request