

Pathways to Sustainability: Results of a Chronic Disease Self-Management Program in a Homeless Population

Linda Hulton, RN, PhD
Professor of Nursing

Tammy Kiser, DNP
Assistant Professor of Nursing

Sharon Zook, DNP, APRN, FNP-BC
Professor of Nursing

2018 DNP National Conference



Objectives

- By the end of this presentation the participant will be able to:
 - Describe the implementation and evaluation of the Chronic Disease Self-Management Program (CDSMP) with a homeless population
 - Discuss steps in the framework of Sustainability in Healthcare by Allocating Resources Effectively (SHARE) framework
 - Identify Doctor of Nursing (DNP) Essentials and Sub objectives that can be linked to this innovative community-based intervention.



Sustainability in Healthcare by Allocating Resources Effectively (SHARE Framework)

Step 1: Identify need for the change

Step 2: Develop proposal for change

SHARE

Step 3: Implement Change Proposal

Step 4: Evaluate Outcomes of Change

Evidence-based Approach

Address System Issues

Use CBPR

Pilot Project Design

- Needs assessment and Literature review of Chronic Disease Self-Management Program (CDSMP) and homelessness
- IRB approval
- Non-experimental one group pretest/posttest design
- Homeless clients (n = 10) who were diagnosed with a chronic illness and resided at a faith-based shelter in a mid-Atlantic state.
- Funded by internal grant from the JMU School of Nursing



Implementation of CDSMP

- 6 weeks evidence based small group workshops developed at Stanford by licensed leaders with additional health coaching and case management
- Based on Social Learning Theory
- Outcomes Measured: self-rated health, health distress, self-efficacy, exercise behaviors, and communication with Health Care Providers
- Additional incentives: transportation, case management, refrigerator at shelter for snacks, “MyPlate”, health coaching, field trip to grocery store, giftcard for completion



Results

Changes in Outcome Variables between Pretest/Posttest for Homeless

<u>Construct</u>	<u>Pretest Mean</u>	<u>Posttest Mean</u>	<u>Other Populations with Chronic Illness*</u>
Self-rated Health (1-5) ↓	3.6	3.3	3.29 (N = 51)
Health Distress (1-5) ↓	3.2	2.0	2.04 (N = 51)
Fatigue (0-10) ↓	6.1	7.1	4.89 (N = 122)
Shortness of Breath (0-10) ↓	5.0	5.3	2.43 (N = 122)
Pain (0-10) ↓	7.0	8.0	4.36 (N = 122)
Exercise Behaviors (minutes/week) ↑			
Stretching (Range 0 -180)	62.5	65	40.1 (N = 1,127)
Aerobic Exercise (Range 0 – 540)	135	192	90.6 (N = 1,130)
Self-efficacy (1-10) ↑	3.6	7.0	5.17 (N = 605)
Communication with Healthcare Provider (0-5) ↑	1.6	2.6	3.08 (N =1,130)
Healthcare Utilization in past 6 months			
Healthcare Profession visit for physical health	8.6	8.0	5.33 (N = 1,130)
Emergency Department visits	1.2	.80	.40 (N = 1, 130)
Times Hospitalized	.83	.83	.23 (N = 1, 130)

↑ indicates a higher score is better
 ↓ indicates a lower score is better
 Parentheses after each variable gives the possible ranges of the scale

Barriers

- *Uniqueness of homelessness: transportation issues, nutrition, hygiene
- *Health Literacy

- *Comfort levels of providers and volunteers
- *Physical space at shelter site
- *Funding issues

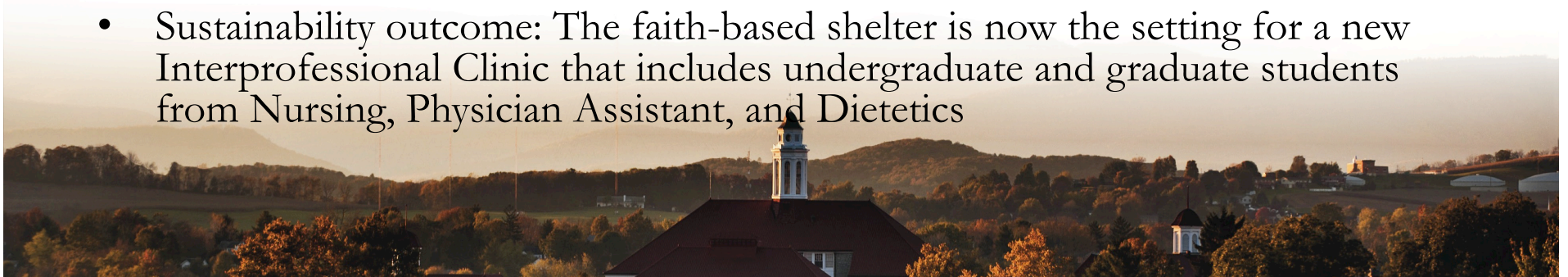
Lessons Learned

- *Importance of Cost Analysis
- *Attrition rates with homeless
- *Need for case management services

- *Interprofessional communication
- *Expect the unexpected
- *Additional incentives are needed for this population (health coach, giftcards, field trips)

Implications for DNP Education

- DNP Essentials/Subobjectives:
 - Essential VI: Interprofessional Collaboration for Improving Patient and Population Outcomes
 - Essential VII: Clinical Prevention and Population Health for Improving Nation's Health
- DNP students have become certified CDSMP trainers as DNP practicum time
- Past and present DNP Projects are testing the CDSMP in Veteran's and Kurdish populations.
- 4 DNP students have completed a Health Policy Institutes with National Homeless Alliance non-profit agency in Washington DC.
- The project gave access to a growing high need population in a healthcare system and expanded community partnerships.
- Working with the homeless population takes advanced levels of problem-solving required for advanced nursing practice.
- Sustainability outcome: The faith-based shelter is now the setting for a new Interprofessional Clinic that includes undergraduate and graduate students from Nursing, Physician Assistant, and Dietetics



References

Baggett, T. P., O'Connell, J. J., Singer, D.E. & Rigotti, N. A. (2010). The unmet health care needs of homeless adult: A national study. *American Journal of Public Health*. 2010 July; 100 (7): 1326-1333.

Harris, C., Allen, K., Brooke V., Dyer, T., Waller, C., King, R., Ramsey, W., & Mortimer, D. (2017). Sustainability in healthcare by allocating resources effectively (SHARE) 6: investigating methods to identify, prioritize, implement, and evaluate disinvestment projects in local healthcare settings. *BMC Health Services Research*, 17 (370). DOI: 10.1186/s12913-017-2269-1.

Institute of Medicine. *Living well with chronic illness: a call for public health action*. Washington (DC): The National Academies Press. 2012. Retrieved from: <http://www.iom.edu/Reports/2012/Living-Well-with-Chronic-Illness.aspx>

Lorig, K., Sobel, D., Ritter, P., Laurent, D., & Hobbs, M. Effect of a self-management program for patients with chronic disease. *Effective Clinical Practice*, 2001 November-December; 4 (6): 246-262.

Lorig, K., Stewart, A., Ritter, P., Gonzalez, V., Laurent, D., & Lynch, J. *Outcome Measures for Health Education and Other Health Care Interventions*. Sage Publications: Thousand Oaks, CA, 1996.

Ory, M., Ahn, S., Jiang, L., et al., (2013). Successes of a national study of the chronic disease self-management program: Meeting the Triple Aim of Health Care Reform, *Medical Care*, 2013 November; 51(11): 992-998.

Smith, S.M., Soubhi, H., Fortin, M., et al. Interventions for improving outcomes in patients with multimorbidity in primary care and community settings. *Cochrane Database of Systematic Reviews*. 2012. 18 (4). doi: 10.1002/14651858.CD006560.pub2.

Stanford Patient Education Research Center. *Chronic disease self-management program (Better Choices, Better Health® Workshop)*, 2014. Retrieved from <http://patienteducation.stanford.edu/programs/cdsmp.html>

Weinstein, L. LaNoue, M., Plumb et al. A primary care-public health partnership addressing homelessness, serious mental illness, and health disparities. *Journal of the American Board of Family Medicine*, 2013. May-June; 26(3): 279-287.