



An Integrated System of Care to Improve Behavioral Health Care Delivery in Nevada: Certified Community Behavioral Health Clinic (CCBHC) Estrella P. Evangelista, DNP, MEd, CNL, RN



Federal Drivers of Change

- Early death for individuals with Mental Health (MH) & Substance Use Disorders (SUD) resulting from chronic diseases
- Increased SUD Deaths related to opiates & new drugs
- Under/Undiagnosed/Untreated MH disorders

Nevada Drivers of Change

- Lack of resources (providers, funding, access)
- Not providing wrap around service for need
- Inaccurate epidemiological data to depict actual SUD & MH needs in the state
- Recidivism

Excellence in Mental Health Act (2014)

Increased access to community behavioral health services; improved Medicaid reimbursement for community behavioral health services. Nevada was 1 of the 8 states chosen to a CCBHC project demo.

WestCare Foundation

Non profit organization providing a variety of health & human services including SUDs, homeless shelters, domestic violence & mental health prevention & treatment programs; operate in 18 states & 3 territories.

Purpose

Systems improvement & overall client health through:
1. COMPREHENSIVE, QUALITY, CLIENT CENTERED MH & SUD treatment.

2. **COMMUNITY BASED, INTEGRATED, WRAP AROUND** behavioral with physical health care
3. **EVIDENCED BASED strategies**

Conceptual Framework



Implementation Strategies

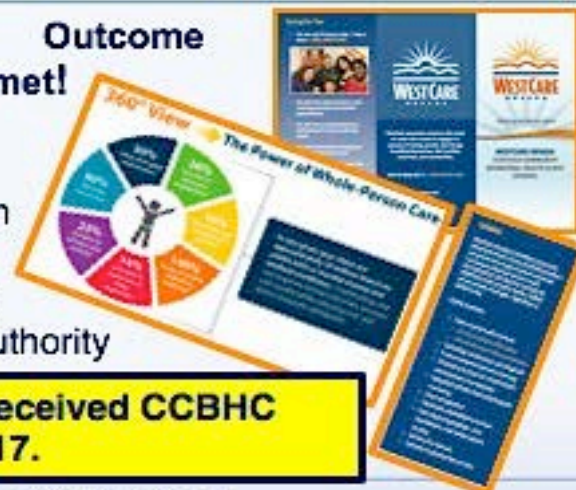
Dedicated Community Liaison
Quality Improvement Team
Capacity Building Teams
Revenue Maximization Specialist
Medical Professionals Team
Become a Peer Agency
Telehealth Expansion
Onsite enrollers
Expanded access point sites
Child & Family Engagement Centers
DCOs/Community Partnerships
Mobile Crisis Teams; 24 hour crisis call line.



Outcome

All measures were met!

- X Staffing
- X Accessibility
- X Care coordination
- X Service scope
- X Quality/reporting
- X Organizational authority



WestCare Nevada received CCBHC designation in 6/2017.

Implications

- Access to **coordinated & integrated** care for all
- Special focus on care for those with Serious Mental Illness & Emotional Disturbance & chronic SUD
- **Expansion** of whole person-directed, family-centered, trauma-informed & recovery oriented care
- Expanded and **improved data collection**
- **Long-lasting** benefits for enrollees

Update

Process & outcome data will be abstracted & reported after 6,12, 18 & 24 mos. after program designation.

References:

WestCare Foundation. <https://www.westcare.com/>
CBBHC: <https://www.thenationalcouncil.org/topics/certified-community-behavioral-health-clinics/>